

# SECTIONAL INDUSTRIAL DOOR WITHOUT SPRINGS



## Description of the Product,

The R&D DOORS Industrial sectional door fabricated with the sandwich panel is one of the best options for the proper closing and functioning of the Industrial warehouses, factories and large sheds which enhances both thermal and acoustic insulation.

The sandwich panel door is constructed with sections of double sheet steel with injected insulation. Pre-designed with horizontal grooving and stucco type embossing, exterior and interior. White color similar to RAL 9010. Intermediate joints between sections. Top Seal, Bottom Seal and Side Seals in EPDM grade rubber. Bolted galvanized steel hinges, guide rails for ball-bearing, self-adjusting rollers. Profile guides, Z-200 galvanizing and lifting through a tube with a diameter of 152 x 5, with lateral winding drums and high performance geared motor, achieving a perfect balance of the door.

**Drives:** Direct drives to the shaft or with chain drive, for three-phase current 3 ~ Ph, 50 Hz, or single-phase 1 ~ Ph, 50 Hz, 60% ED, protection class IP 65, with chain emergency opening system and TÜV certificate.

**Control:** CS 300 with special development for roller and sectional doors, optimally adapted to the requirements required in this sector, with fully developed microprocessor, 4 programmable relay outputs with 28 functions, integrated adjustable force limitation, final position adjustment via absolute value transmitter, status and diagnostic messages, 24 V control voltage, IP 65 protection type.

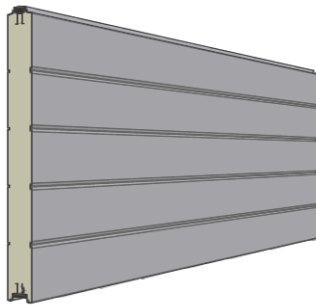


# SECTIONAL INDUSTRIAL DOOR WITHOUT SPRINGS

## TECHNICAL SPECIFICATIONS

- STANDARD COLORS	RAL 9010 ,RAL 9006, RAL 5010,RAL 8014,RAL 3000,RAL 7016,RAL 1021
- SPECIAL COLORS	ALL THE COLORS AS PER RAL.
-HEIGHT OF THE PANELS	500/610mm
-WEIGHT OF THE CURTAIN	+/-13 Kg/M2
-WIND LOAD EN 12424	Clase 4 UPTO 4000 mm. Clase 3 UPTO 6000 mm. Clase 2 UPTO 9000 mm.
-WATER PERMEABILITY EN 12425	Clase 3
-ACOUSTIC INSULATION EN 717-1	24 dB
-COEFFICIENT TRANSMISSION THERMIC	U= 1.6 W/(m <sup>2</sup> K)

## PANEL



### OUTER SHEET

- Thickness 0,48 mm
- Galvanized Z225
- Pre-painted with polyester of thickness 25μ or PU Paint (Smooth Colors)
- Laminated with 115μ thickness of PVC Film. (Imitation Wood)

### INNER SHEET

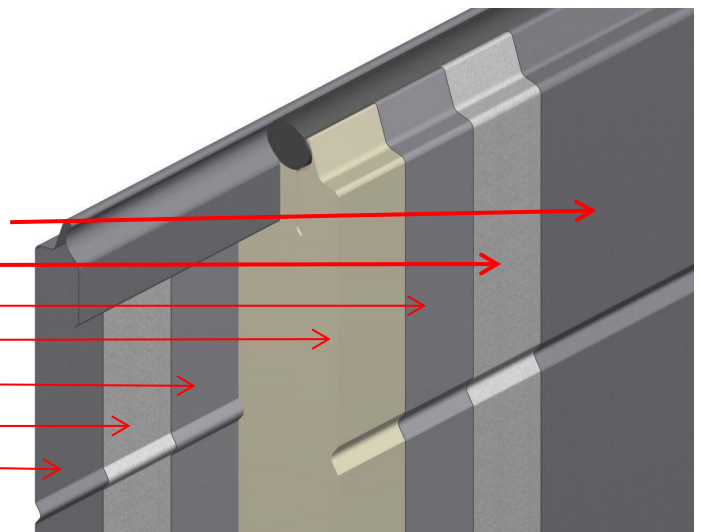
- Thickness 0,30mm
- Galvanized Z100
- Pre-painted with polyester of thickness 25μ
- Film protector PVC
- thickness 25μ
- Heights quoted in mm:

### PUR FOAM

- Density 38 to 40Kg/m<sup>3</sup>
- Without HFC and CFC
- Seal: EPDM

## CONSTRUCTION OF INDUSTRIAL PANEL

- Lamination of Polyester or PVC Film
- Primer
- Galvanized Steel Z225
- Foam
- Galvanized Steel Z100
- Primer
- Lamination of Polyester



# SECTIONAL INDUSTRIAL DOOR WITHOUT SPRINGS

## GUIDE TRACKS

Profile based guides, Hot Dipped galvanized Dx51-Z200 of 2 mm assemblies with steel rivets and side guides of EPDM bi-component.



## LIFTING SYSTEM



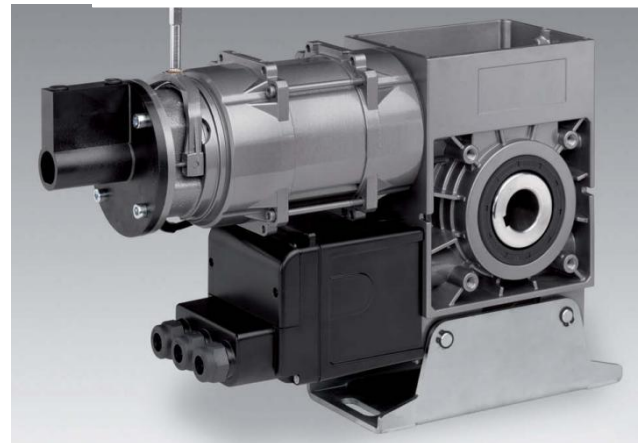
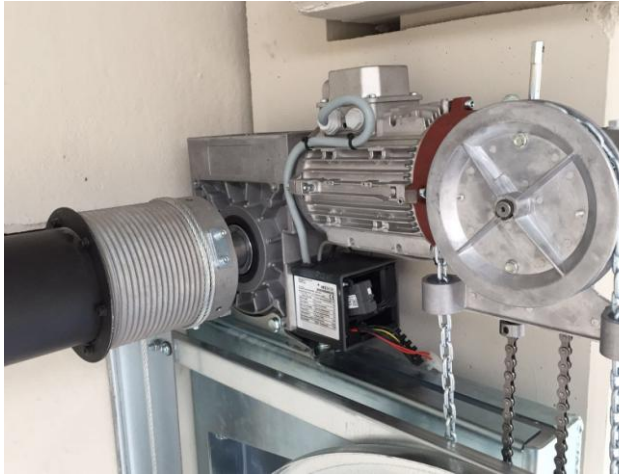
The greatest achievement of this door is given by the **UNIQUE LIFTING** system.

A tube of proportional dimensions with the sides mounted a set of drums perfectly designed for the winding of the cables of the section following the same logic of operation of the traditional doors of springs, with the only variant of being without the effort of the springs. The power of the different motors that are installed to the side of the door does this with ease.

It is an ideal system for large doors where the springs present a problem of installation, operation and maintenance.



## SECTIONAL INDUSTRIAL DOOR WITHOUT SPRINGS



The powerful SA series drives are the ideal solution for sectional doors without springs. The maintenance-free parachute system is already integrated, offering the safest solution for the door. With complete models from 180 to 1650 Nm, R & D DOORS also offers in this segment the suitable solution. Thanks to their compact design, the drives can be mounted simply and properly. Special solutions for individual customer demands can be developed at all times,



# SECTIONAL INDUSTRIAL DOOR WITHOUT SPRINGS



The control CS 300 is specially developed for roll-up, sectional and sliding doors, optimally adapted to the requirements demanded in this sector.

The microprocessor control, fully developed and controlled through an encoder of absolute value (encoder). With the CS 300 you can connect all existing elements in accessories for automatic door, as well as programming all imaginable possibilities of operation.

- 4 programmable relay outputs with 28 functions respectively

## ADVANTAGES OF LIFTING SYSTEM WITHOUT SPRINGS

### DURING INSTALLATION

The lack of springs ensures that the installation of the door is faster and safer, reducing the risks of assembly and avoiding possible injuries.

### - MAINTENANCE WORK AND ITS COST

The maintenance of the door is highly reduced because there are no springs that need to be tightened by loss of resistance.

The economic cost of the same is reduced to the minimum, since we eliminate the re-testing and the replacement of these by breakage when completing the cycles of life for which they were prepared.

### -FUNCTIONING OF THE INSTALLATION.

The operation is quieter, even and safe due to the rigidity / simplicity of the system and the uniformity of the movement.

## R&D DOORS, S.L.

CIF: B71109284  
Polígono industrial Mórea sur nº 30  
31191- Beriain. (NAVARRA)  
SPAIN  
[export@rddoors.com](mailto:export@rddoors.com)